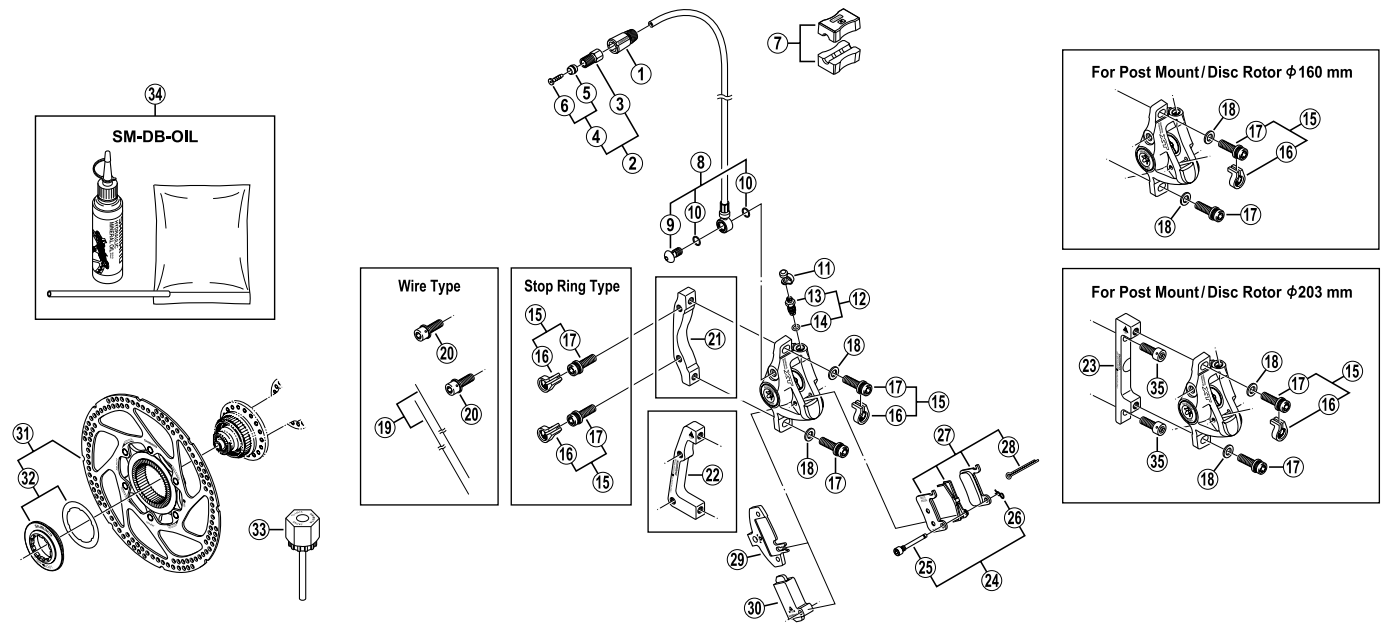


DEORE XT Front Disc Brake

**BR-M765** Brake Caliper  
**SM-RT77** Disc Rotor

**SM-BH63** Brake Hose



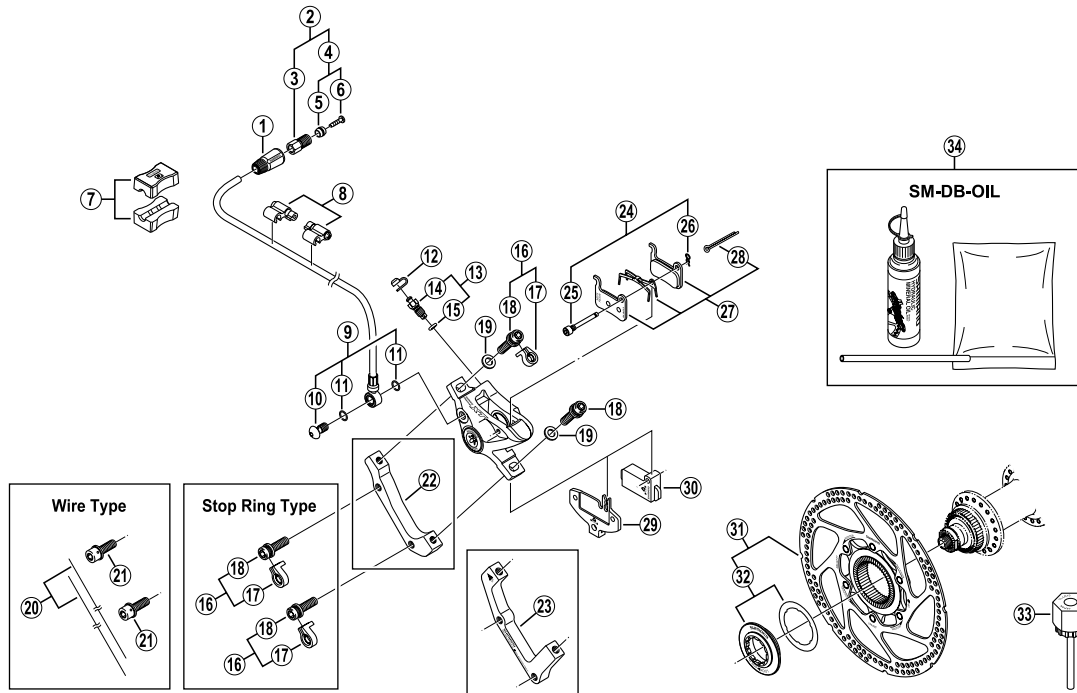
ITEM NO.	SHIMANO CODE NO.	DESCRIPTION
1	<b>Y-8H2 03010</b>	Cover
2	<b>Y-8H2 98010</b>	Connecting Bolt Unit
3	<b>Y-8H2 01000</b>	Connecting Bolt
4	<b>Y-8H2 98020</b>	Olive & Connecting Insert
5	<b>Y-8H2 04000</b>	Olive
6	<b>Y-8H2 02000</b>	Connecting Insert
7	<b>Y-8H1 98030</b>	TL-BH61 Special Tool (2 pcs.)
8	<b>Y-8H0 98010</b>	Banjo Bolt & O-Ring
9	<b>Y-8H0 01500</b>	Banjo Bolt
10	<b>Y-8SY 28000</b>	O-Ring
11	<b>Y-8B2 14000</b>	Bleed Nipple Cap
12	<b>Y-8CL 98050</b>	Bleed Nipple & Seal Ring
13	<b>Y-8CL 24000</b>	Bleed Nipple
14	<b>Y-8B5 11001</b>	O-Ring for Bleed Nipple
* 15	<b>Y-8DS98010</b>	Adapter Fixing Bolt & Stop Ring
16	<b>Y-8C5 11000</b>	Stop Ring
* 17	<b>Y-8C5 09020</b>	Adapter Fixing Bolt (M6 x 18.7) for Stop Ring Type
18	<b>Y-8B2 15000</b>	Spacer (0.5 mm)
19	<b>Y-8B2 98010</b>	Wire (2 pcs.)
20	<b>Y-8B5 12000</b>	Adapter Fixing Bolt (M6 x 19) for Wire Type
21	<b>Y-8C5 08100</b>	A-Standard Mount Adapter for Disc Rotor $\phi$ 160 mm
22	<b>Y-8CZ 01000</b>	A-Standard Mount Adapter (SM-MA-F203P/S) for Disc Rotor $\phi$ 203 mm
23	<b>Y-8CZ 01030</b>	Post Mount Adapter (SM-MA-F203P/P) for Disc Rotor $\phi$ 203 mm
24	<b>Y-8CY 98020</b>	Pad Axle & Snap Ring
25	<b>Y-8CY 04000</b>	Pad Axle
26	<b>Y-8B2 12000</b>	Snap Ring
27	<b>Y-8CY 98010</b>	Resin Pad (M07S) & Spring w/Split Pin
	<b>Y-8CL 98010</b>	Metal Pad (M06) & Spring w/Split Pin
28	<b>Y-8DB06000</b>	Split Pin
29	<b>Y-8CL 12000</b>	Pad Spacer
30	<b>Y-8CL 18000</b>	Spacer for Bleeding
31	<b>Y-8HV 98010</b>	SM-RT77 Disc Rotor Unit ( $\phi$ 160 mm)
	<b>Y-8HV 98020</b>	SM-RT77L Disc Rotor Unit ( $\phi$ 203 mm)
* 32	<b>Y-8CL 98090</b>	Lock Ring & Washer
33	<b>Y-120 09230</b>	TL-LR15 Lock Ring Removal Tool
34	<b>Y-839 98010</b>	Mineral Oil Bleed Kit (50 ml)
* 35	<b>Y-8B2 32200</b>	Adapter Fixing Bolt (M6 x 15)

0508-2274C

DEORE XT Rear Disc Brake

**BR-M765** Brake Caliper  
**SM-RT77** Disc Rotor

**SM-BH63** Brake Hose



ITEM NO.	SHIMANO CODE NO.	DESCRIPTION
1	Y-8H2 03010	Cover
2	Y-8H2 98010	Connecting Bolt Unit
3	Y-8H2 01000	Connecting Bolt
4	Y-8H2 98020	Olive & Connecting Insert
5	Y-8H2 04000	Olive
6	Y-8H2 02000	Connecting Insert
7	Y-8H1 98030	TL-BH61 Special Tool (2 pcs.)
8	Y-830 98040	SM-HANG Hose Supporter A & B
9	Y-8H0 98010	Banjo Bolt & O-Ring
10	Y-8H0 01500	Banjo Bolt
11	Y-8SY 28000	O-Ring
12	Y-8B2 14000	Bleed Nipple Cap
13	Y-8CL 98050	Bleed Nipple & Seal Ring
14	Y-8CL 24000	Bleed Nipple
15	Y-8B5 11001	O-Ring for Bleed Nipple
* 16	Y-8DS 98010	Adapter Fixing Bolt & Stop Ring
17	Y-8C5 11000	Stop Ring
* 18	Y-8C5 09020	Adapter Fixing Bolt (M6 x 18.7) for Stop Ring Type
19	Y-8B2 15000	Spacer (0.5 mm)
20	Y-8B2 98010	Wire (2 pcs.)
21	Y-8B5 12000	Adapter Fixing Bolt (M6 x 19) for Wire Type
22	Y-8C5 18100	A-Standard Mount Adapter for Disc Rotor $\phi$ 160 mm
23	Y-8CZ 01010	A-Standard Mount Adapter (SM-MA-R203P/S) for Disc Rotor $\phi$ 203 mm
24	Y-8CY 98020	Pad Axle & Snap Ring
25	Y-8CY 04000	Pad Axle
26	Y-8B2 12000	Snap Ring
27	Y-8CY 98010	Resin Pad (M07S) & Spring w/Split Pin
	Y-8CL 98010	Metal Pad (M06) & Spring w/Split Pin
28	Y-8DB06000	Split Pin
29	Y-8CL 12000	Pad Spacer
30	Y-8CL 18000	Spacer for Bleeding
31	Y-8HV 98010	SM-RT77 Disc Rotor Unit ( $\phi$ 160 mm)
	Y-8HV 98020	SM-RT77L Disc Rotor Unit ( $\phi$ 203 mm)
* 32	Y-8CL 98090	Lock Ring & Washer
33	Y-120 09230	TL-LR15 Lock Ring Removal Tool
34	Y-839 98010	Mineral Oil Bleed Kit (50 ml)

0508-2275C